

CLEAN ROOM

CRS-SERIES

DESIGNED FOR CLASS 10,000 USE

Meeting the clean room processing needs of pharmaceutical processors and high-tech manufacturers, CRS-Series strap hoists are designed for operation inside controlled environments. Various models and trolley options accommodate loads up to 4,000 pounds.

LUBE-FREE LIFTING STRAP

By using a polypropylene lifting strap, CRS-Series hoists eliminate the contamination associated with the surface lubrication of chain and wire rope. Metallic dust and particulate contamination caused by chain abrasion and wire rope wear is also eliminated.

CRACK & CREVICE FREE CONSTRUCTION

The easy-to-clean open design of CRS-Series strap hoists features stainless steel surfaces polished in addition to flush mounting faces, ground welds and plugged fasteners to reduce the likelihood of contaminant build-up.

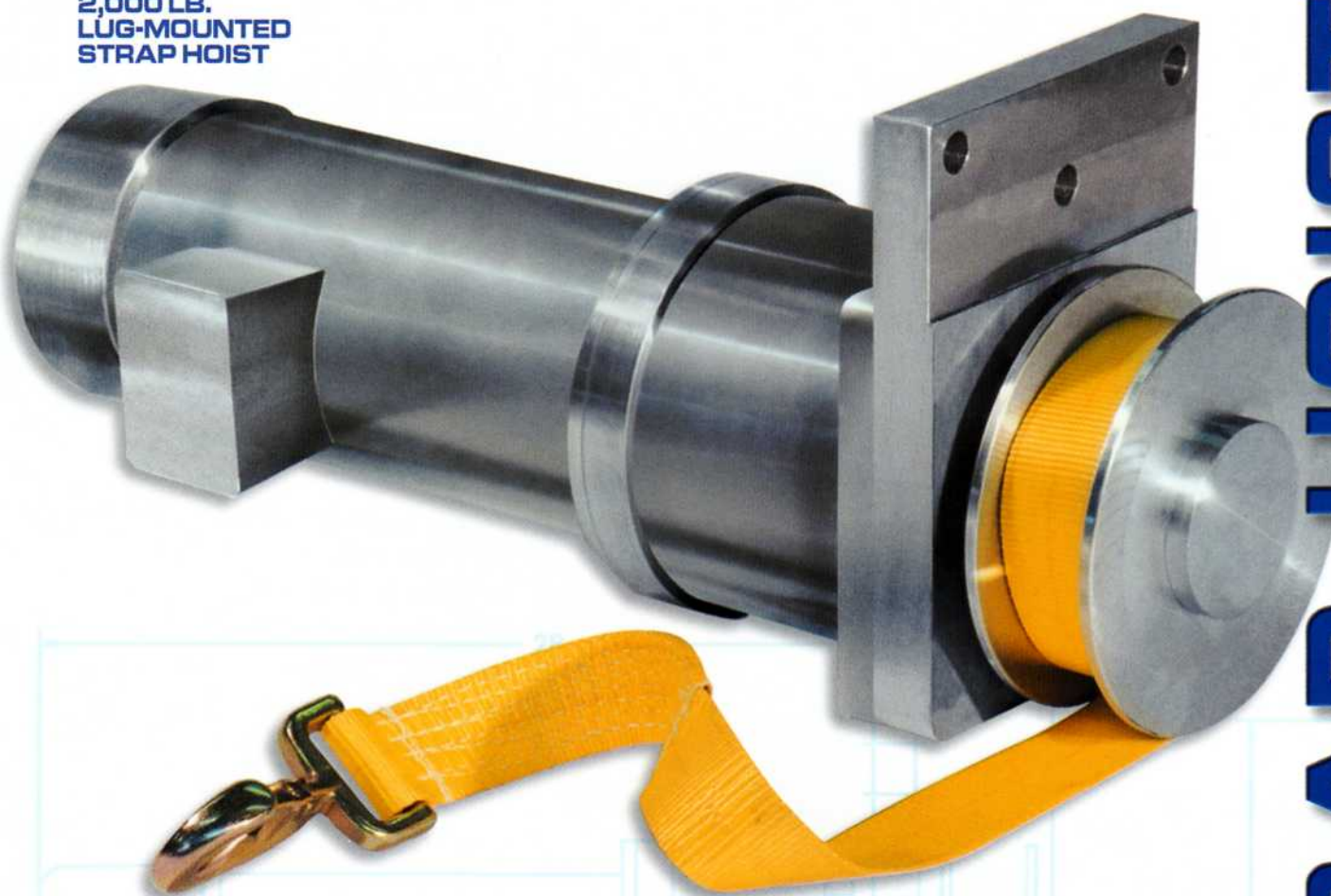


Class 10,000 electric strap hoist rated for 2,000lb. capacity



CLEAN ROOM

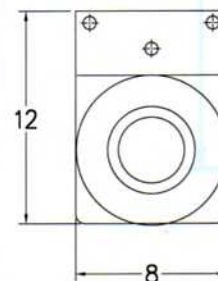
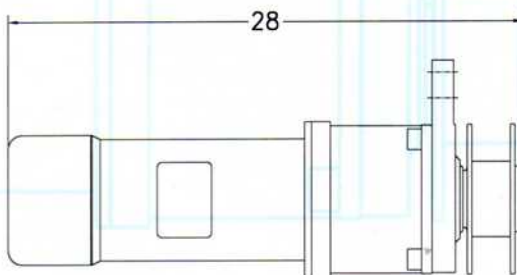
2,000 LB.
LUG-MOUNTED
STRAP HOIST



STRAP HOISTS

STANDARD FEATURES

- Polished stainless steel external components
- Sealed gearing with food-grade lubrication
- Clean room grade motor and motor brake
- Polypropylene lifting strap
- Stainless steel load hook with latch
- Stainless steel NEMA 4X electrical enclosure
- Single speed reversing contactor with thermal overload relay and transformer
- NEMA 4X 2-button pendant
- Lug mounted
- 230/460 Volts – 60Hz – 3 Phase



OPTIONS

- Hook travel limit switch
- 115/230 Volts - Single Phase
- Various levels of polished surfaces
- Variable speed operation with AC inverter
- Stainless steel push or motorized trolley
- Nylon / composite trolley wheels
- Trolley soft start
- Mainline contactor
- Complete overhead systems

